



GENERAL CARBIDE®

REDEFINING POSSIBLE



SPECIALTY GRADE POWDER METAL TOOLING

MOLDING DIES ■ SIZING DIES ■ CORES



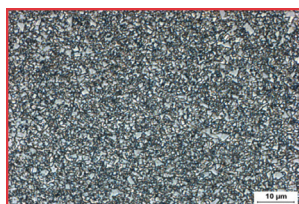
GENERALCARBIDE®

SPECIALTY GRADE POWDER METAL TOOLING

Specialty Powder Metal Grades

Application Background

The grades shown are a popular choice for powder metal dies and core pins and are used in both wire EDM and non-wire EDM applications. The unique properties of these grades make them an excellent choice for a variety of PM applications.



GC-010

INDUSTRY

CODE

C2/C9

STANDARD

GC-206

SPECIALTY

GC-0004
GC-010CR

COMMENTS

- > High Wear Dies
- > Small WEDM Dies & Pins
- > Excellent for Pressing Ceramics & Large non-EDM Liners



GC-813CT

INDUSTRY

CODE

C10

STANDARD

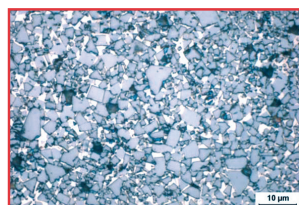
GC-209

SPECIALTY

GC-813CT*

COMMENTS

- > High Wear
- > Fine Teeth
- > WEDM Dies & Cores
- > Intricate Forms
- > Ceramics
- > Excellent for Stainless PM



GC-411CT

INDUSTRY

CODE

C11

STANDARD

GC-211*

SPECIALTY

GC-411CT*

COMMENTS

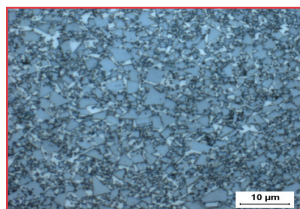
- > Med. Size WEDM Dies
- > High Toughness
- > Form, Gear Dies & Cores
- > Excellent for Stainless PM
- > Excellent Wear



GENERALCARBIDE®

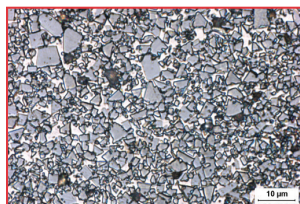
SPECIALTY GRADE POWDER METAL TOOLING

Specialty Powder Metal Grades



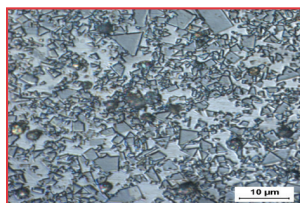
GC-712C

INDUSTRY CODE	STANDARD	SPECIALTY	COMMENTS
C12	GC-313*	GC-411CT* GC-712C*	<ul style="list-style-type: none">> Med./Large Size WEDM Dies> High Toughness> Form, Gear Dies & Cores> Excellent Wear



GC-613CT

INDUSTRY CODE	STANDARD	SPECIALTY	COMMENTS
C13	GC-315*	GC-613CT* GC-415CT*	<ul style="list-style-type: none">> Med./XL Size WEDM Dies> Extreme Toughness> Good Wear> Complex Internal Shapes



GC-425CT

INDUSTRY CODE	STANDARD	SPECIALTY	COMMENTS
C14	GC-320*	GC-618CT* GC-425CT*	<ul style="list-style-type: none">> High Impact Sizing Dies> Complex Internal Shapes> Excellent Shock & Impact Strength> GC-425CT exhibits the highest fracture toughness of any grade

* WEDM GRADE

T = ADDITION OF TaC FOR LUBRICITY

CT = GRADES ARE CORROSION RESISTANT

NOTE: The "T" designation in all grades represents the addition of tantalum carbide, which adds lubricity and resistance to galling in wear areas. Some of the above grades are also available without the addition of tantalum.

To ensure the highest metallurgical quality, General Carbide processes all grades in sinter-HIP furnaces.

All carbide inserts can be provided with O.D., I.D. and overall length ground to your specifications.

EXPEDITED DELIVERY AVAILABLE

TUNGSTEN CARBIDE TOOLING, WEAR PARTS & SPECIALTY COMPONENTS

We manufacture more than 50 grades of tungsten carbide tooling for a wide range of industrial wear and metal forming applications. In addition to making EDM blocks, we produce metallurgical powders that we shape, sinter and finish-grind into tungsten carbide parts. Our unbeatable combination of high-quality materials, metallurgical expertise, and engineering excellence make us the market leader.

The company was established more than 45 years ago and is headquartered in Greensburg, PA, near Pittsburgh. As a woman-owned business, we have achieved certification from the Women's Business Enterprise National Council (WBENC).



GENERALCARBIDE®

REDEFINING POSSIBLE™

General Carbide Corporation

1181 Garden Street ■ Greensburg, PA 15601

TEL: 800.245.2465 ■ 724.836.3000

sales@generalcarbide.com



10/2025

GENERALCARBIDE.COM