



**GENERAL CARBIDE®**

REDEFINING POSSIBLE



# **SPECIALTY GRADE POWDER METAL TOOLING**

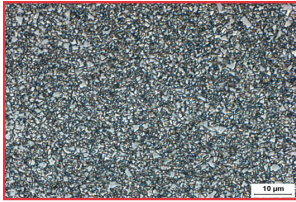
**MOLDING DIES ■ SIZING DIES ■ CORES**



## Specialty Powder Metal Grades

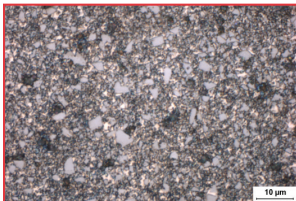
### Application Background

The grades shown are a popular choice for powder metal dies and core pins and are used in both wire EDM and non-wire EDM applications. The unique properties of these grades make them an excellent choice for a variety of PM applications.



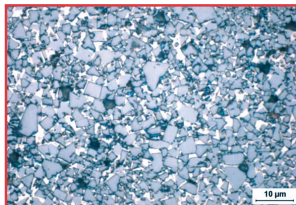
**GC-010**

INDUSTRY CODE	STANDARD	SPECIALTY	COMMENTS
C2/C9	GC-106	GC-0004	> High Wear Dies
		GC-010CR	> Small WEDM Dies & Pins > Excellent for Pressing Ceramics & Large non-EDM Liners



**GC-813CT**

INDUSTRY CODE	STANDARD	SPECIALTY	COMMENTS
C10	GC-209	GC-813CT*	> High Wear > Fine Teeth > WEDM Dies & Cores > Intricate Forms > Ceramics > Excellent for Stainless PM

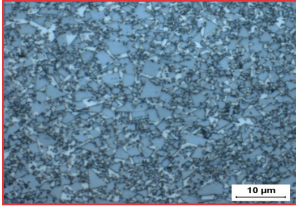


**GC-411CT**

INDUSTRY CODE	STANDARD	SPECIALTY	COMMENTS
C11	GC-211*	GC-411CT*	> Med. Size WEDM Dies > High Toughness > Form, Gear Dies & Cores > Excellent for Stainless PM > Excellent Wear

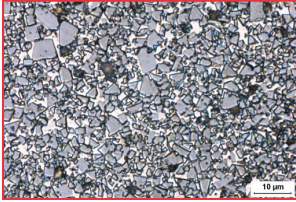


# Specialty Powder Metal Grades



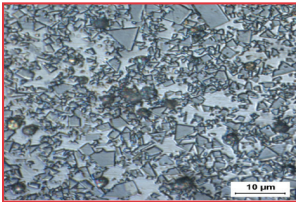
**GC-712C**

INDUSTRY CODE	STANDARD	SPECIALTY	COMMENTS
C12	GC-313*	GC-411CT* GC-712C*	<ul style="list-style-type: none"> <li>&gt; Med./Large Size WEDM Dies</li> <li>&gt; High Toughness</li> <li>&gt; Form, Gear Dies &amp; Cores</li> <li>&gt; Excellent Wear</li> </ul>



**GC-613CT**

INDUSTRY CODE	STANDARD	SPECIALTY	COMMENTS
C13	GC-315*	GC-613CT* GC-415CT*	<ul style="list-style-type: none"> <li>&gt; Med./XL Size WEDM Dies</li> <li>&gt; Extreme Toughness</li> <li>&gt; Good Wear</li> <li>&gt; Complex Internal Shapes</li> </ul>



**GC-425CT**

INDUSTRY CODE	STANDARD	SPECIALTY	COMMENTS
C14	GC-320*	GC-618CT* GC-425CT*	<ul style="list-style-type: none"> <li>&gt; High Impact Sizing Dies</li> <li>&gt; Complex Internal Shapes</li> <li>&gt; Excellent Shock &amp; Impact Strength</li> <li>&gt; GC-425CT exhibits the highest fracture toughness of any grade</li> </ul>

\* WEDM GRADE

T = ADDITION OF TaC FOR LUBRICITY

CT = GRADES ARE CORROSION RESISTANT

**NOTE:** The "T" designation in all grades represents the addition of tantalum carbide, which adds lubricity and resistance to galling in wear areas. Some of the above grades are also available without the addition of tantalum.

**To ensure the highest metallurgical quality, General Carbide processes all grades in sinter-HIP furnaces.**

**All carbide inserts can be provided with O.D., I.D. and overall length ground to your specifications.**

**EXPEDITED DELIVERY AVAILABLE**

# TUNGSTEN CARBIDE TOOLING, WEAR PARTS & SPECIALTY COMPONENTS

We manufacture more than 50 grades of tungsten carbide tooling for a wide range of industrial wear and metal forming applications. In addition to making EDM blocks, we produce metallurgical powders that we shape, sinter and finish-grind into tungsten carbide parts. Our unbeatable combination of high-quality materials, metallurgical expertise, and engineering excellence make us the market leader.

The company was established more than 45 years ago and is headquartered in Greensburg, PA, near Pittsburgh. As a woman-owned business, we have achieved certification from the Women's Business Enterprise National Council (WBENC).



**GENERALCARBIDE®**

REDEFINING POSSIBLE™

## General Carbide Corporation

1181 Garden Street ■ Greensburg, PA 15601

TEL: 800.245.2465 ■ 724.836.3000

FAX: 800.547.2659 ■ 724.836.6274

[sales@generalcarbide.com](mailto:sales@generalcarbide.com)



CLASS 10  
**FFL**

Certified  
**WBENC**  
*Women's Business Enterprise*

MADE IN THE  
**USA**

[GENERALCARBIDE.COM](http://GENERALCARBIDE.COM)