

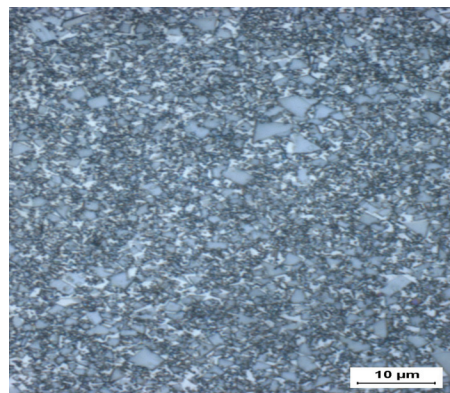


Concrete Industry Wear Parts



Application Background

In use as a wear plate in refractory block and concrete roof tile manufacturing, the high abrasion resistance of the **CWP** grade is far superior to D2 tool steel or Ni-hard plates. The medium particle size used, coupled with an intermediate binder content, provides a wear resistant grade with moderate resistance to impact. In concrete compaction dies, wear life extended to 20X that of steel die liners is not unusual, depending on production rates. The high fracture toughness is advantageous for holding an edge when this material is used as a cut off or sectioning blade. Note the uniform grain structure.



To ensure the highest metallurgical quality, General Carbide processes all grades in sinter-HIP furnaces.

